



PIEDMONT TECHNICAL COLLEGE

INVITES APPLICATIONS FOR

PRESIDENT



PIEDMONT
TECHNICAL COLLEGE



ABOUT THE POSITION

An exciting leadership opportunity exists at a progressive, comprehensive technical college located in upstate South Carolina. The College, located in the largest and most diverse region of the technical college system, serves a population of more than 258,467 in a seven-county service area that features a diverse mixture of industries including manufacturing, forestry and agriculture.

The Presidential Search Committee for Piedmont Technical College (PTC), one of sixteen colleges comprising the South Carolina Technical College System, invites applications and nominations for the position of President, the Chief Executive Officer of the College.

ABOUT PIEDMONT TECHNICAL COLLEGE

Founded in 1966 and accredited by the Southern Association of Colleges and Schools Commission on Colleges, PTC is a comprehensive two-year college with its main campus located in Greenwood, South Carolina. With more than 80 programs, PTC offers university-level education and hands-on career training in a variety of career studies programs that prepare students directly for the workforce, continuing education courses for personal and professional development, and a university transfer curriculum designed to fulfill the first two years of a bachelor's degree at four-year colleges and universities. The 2019 combined student population of the college is 4,747 with an FTE enrollment of 3,084. The college employs a permanent faculty and staff of 270.

PTC has seven campuses serving Abbeville, Edgefield, Greenwood, Laurens, McCormick, Newberry and Saluda counties. Geographically, PTC is approximately ninety minutes from Columbia, SC; four hours from Myrtle Beach, SC; three hours from historic Charleston, SC; three hours from Atlanta, Ga.; two hours from Charlotte, NC; and two hours from the mountains of North Carolina.



MINIMUM QUALIFICATIONS

Master's degree required; earned doctorate preferred; and ten years of experience as an academic executive and/or administrative leader, preferably in a technical or community college setting.

SALARY RANGE

\$152,256 - \$236,026

HOW TO APPLY

Persons interested in this leadership opportunity should submit a letter of application and current resume to:

Kandy N. Peacock
*Vice President and Chief Human
Resource Officer*
South Carolina Technical College System
111 Executive Center Drive
Columbia, SC 29210

Email: PTCSearch@sctechsystem.edu

RECENT HIGHLIGHTS

- ▶ PTC is finishing construction of the "Upstate Center for Manufacturing Excellence," a facility designed to support the education and training needs in advanced manufacturing in support of Greenwood County's successful economic development efforts. This project was funded in large part by a Capital Project Sales Tax ballot measure introduced by Greenwood County in November 2016.
- ▶ The college has won statewide and national recognition for two similar community-supported construction projects including the Newberry County Campus, established in 2013 and the Laurens Center for Advanced Manufacturing, established in 2012. The latter project won the 2013 International Economic Development Council (IEDC) Excellence in Economic Development Award and the 2014 National Exemplary Program Award from the National Council for Continuing Education & Training.
- ▶ Four community-funded Promise programs, the Abbeville Promise, the Charlie Foundation Scholarship, the Greenwood Promise and the Laurens Future Scholarship, have been established within the college's service region during the last five years, and the remaining counties are in various stages of studying the feasibility of launching their own programs.
- ▶ PTC is the 2013 recipient of the Community College Futures Assembly Bellwether Award for its institution-wide implementation of Lean in a higher education setting, and has received state and nationwide recognition for excellence in partnering with public and private organizations to meet the needs of its service region.
- ▶ The college's service area includes a diverse industrial base, including many companies resulting from successful economic development efforts by the communities within the region. As a result, the college plays a very active, collaborative role in meeting the needs of these clients. Notable recent companies include ZF Transmissions, Colgate-Palmolive, and Teijin Industries.

STRATEGIC PLAN

Piedmont Technical College is in the second year of a three-year strategic plan entitled "A Commitment to Completion." For a full copy of the current plan, visit www.ptc.edu/stratplan.



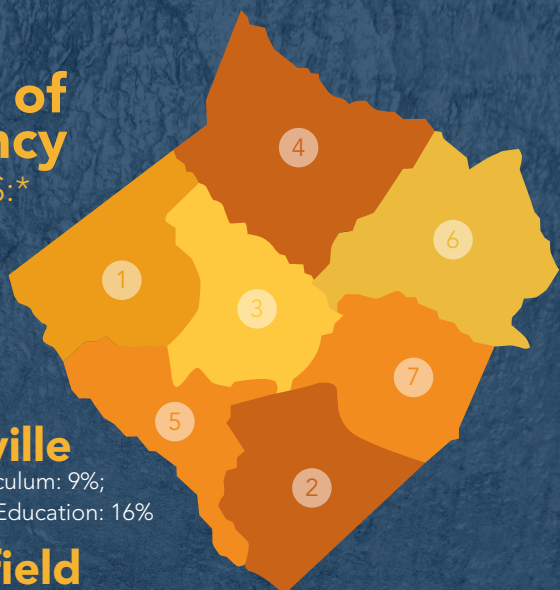
ABOUT GREENWOOD, SC

Greenwood is a thriving, mid-sized town in Upstate South Carolina. For outdoor enthusiasts, Greenwood offers many recreational activities including hiking and camping, and boating on nearby Lake Greenwood. Larger metropolitan areas, including Greenville and Columbia are within easy driving distance. Greenwood has a low cost of living with affordable, desirable housing, quality schools, and excellent medical care. For more information, visit www.cityofgreenwoodsc.com.

INSTITUTIONAL PROFILE

In the last full academic year, Piedmont Technical College enrolled **6,370** students in **107,701** credit hours.

county of residency STATISTICS:*



- 1 abbeville**
Credit Curriculum: 9%;
Continuing Education: 16%
- 2 edgefield**
Credit Curriculum: 4%;
Continuing Education: 2%
- 3 greenwood**
Credit Curriculum: 34%;
Continuing Education: 38%
- 4 laurens**
Credit Curriculum: 14%;
Continuing Education: 8%
- 5 mccormick**
Credit Curriculum: 2%;
Continuing Education: 3%
- 6 newberry**
Credit Curriculum: 12%;
Continuing Education: 22%
- 7 saluda**
Credit Curriculum: 5%;
Continuing Education: 2%
- 8 out of area/state**
Credit Curriculum: 19%;
Continuing Education: 10%

quick facts: FALL SEMESTER 2019

4,747 students enrolled in **46,262** credit hours.

The most common student age is **21**.

62% of students are part-time students.

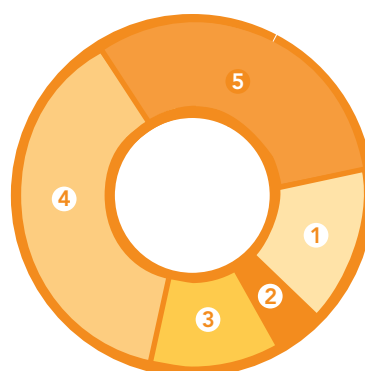
38% are full-time (taking 12 credits or more).

FINANCES

Piedmont Technical College is in a strong financial position. For more information, see our 2019 Audited Financial Statement at www.ptc.edu/about/legal-disclosures/audits-transparency.

REVENUES

Tuition & Fees (Includes Scholarship Allowance)	\$10,751,398
County	2,508,018
State	9,736,846
Grants & Contracts	18,763,930
Other	15,447,450
TOTAL REVENUES	\$57,207,642
INCREASE IN NET POSITION	\$13,786,489*

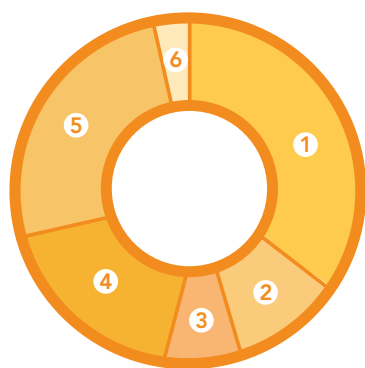


REVENUES:
(1) Tuition & Fees: 19%,
(2) County: 4%,
(3) State: 17%,
(4) Grants & Contracts: 33%,
(5) Other: 27%

EXPENSES

Instruction & Academic Support	\$18,939,368
Student Services	4,769,337
Physical Plant	3,118,826
Institutional Support	7,338,948
Scholarships (Includes Allowance)	7,299,291
Depreciation	1,955,383
TOTAL EXPENSES	\$43,421,153

Note: For complete audited financial statements, refer to the Piedmont Technical College website.



EXPENSES:
(1) Instruction & Academic Support: 43%,
(2) Student Services: 11%,
(3) Physical Plant: 7%,
(4) Institutional Support: 17%,
(5) Scholarships: 17%,
(6) Depreciation: 5%